

## Product Information: Dispensing Cell DC-CNC250

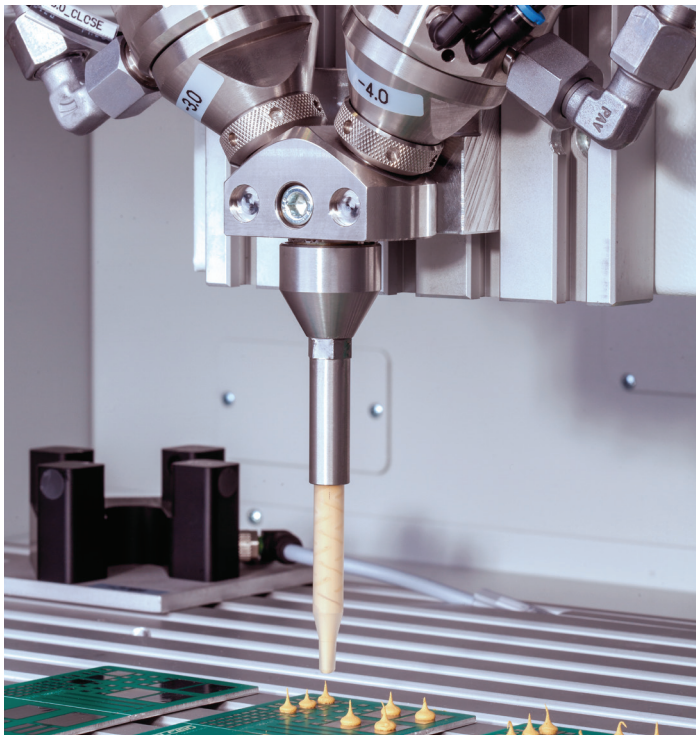
Compact and flexible - the new desktop cell for high-precision dispensing of abrasive materials



Slim design, multiple choices for dispensing of thermal greases, resins, and adhesives



The desktop design allows a flexible arrangement within your production process



### Your Advantages

#### Compact and flexible design

- > Desktop device with integral controls and material supply
- > Material supply from cartridges
- > Comfortable access for maintenance

#### High-precision metering of small quantities

- > Processing of 1- and 2-component materials
- > Viscosity ranges from 100.000 – 700.000 mPa\*s
- > Static mixing unit
- > Freely programmable mix ratio from 100:100 – 100:10
- > For shot sizes > 5 mg
- > Processing of highly abrasive materials

#### Intelligent controls

- > High-resolution 15"-touchpanel with Embedded PC
- > RAMPF process visualisation
- > Operator-friendly safeguarding of work area with lift door

**RAMPF** Production Systems GmbH & Co. KG

Römerallee 14 | 78658 Zimmern o. R. | Germany

T +49.741.2902-0

E [production.systems@rampf-gruppe.de](mailto:production.systems@rampf-gruppe.de)

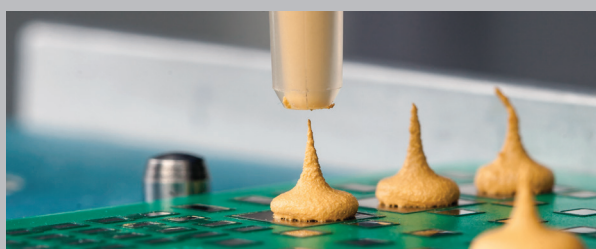
[www.rampf-gruppe.de](http://www.rampf-gruppe.de)

# Dispensing Cell DC-CNC250

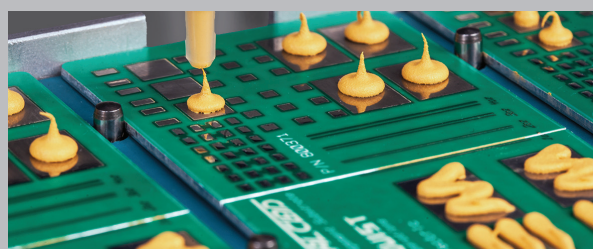
## Product Details

The DC-CNC250 is designed as a desktop device and is freely programmable for dispensing dots and beads. The integrated dispensing system is specially designed for the processing of abrasive 2K-materials. The different components are dispensed by a servo-electric piston system made for extreme service life.

This ensures maximum precision and extended service life during the service intervals. Compatible with all common static miscible greases, adhesives, and resins. To ensure a safe production the machine is equipped with nozzle check.



Reproducible dispensing of abrasive material



Freely programmable dispensing contour

## Technical Data

<b>Flow rate, mixing ratio</b>	0.01-0.5 cm <sup>3</sup> sec <sup>-1</sup> @ mixratio 1:1
<b>Accuracy</b>	C <sub>mK</sub> > 1.67 @ shot size 0.01 +/-10% cm <sup>3</sup> @ 0.01 cm <sup>3</sup> sec <sup>-1</sup>
<b>Shot size</b>	min. 0.005 cm <sup>3</sup> , max. 5 cm <sup>3</sup>
<b>Axis speed</b>	X-Y-Z max. 6 m min <sup>-1</sup>
<b>Repeatability</b>	< 0.1 mm
<b>Material supply</b>	20-oz-cartridges (600 ml)
<b>Max. part volume (L x W x H)</b>	approx. 280 x 280 x 80 mm
<b>Operating system</b>	Windows 7 Embedded compact
<b>Controls</b>	Beckhoff CX 2020
<b>Electrical supply</b>	110-230 V / 50-60 Hz, 16 A
<b>Compressed air consumption</b>	min. 6 bar, 5 l min <sup>-1</sup>
<b>Weight</b>	approx. 180 kg
<b>Dimensions</b>	approx. 900 x 900 x 1100 mm (L x W x H)

## Standard Interface

<b>Inputs</b>	Program-No. 1-15	Automatic START	Acknowledge Fault	START-Enable				
<b>Outputs</b>	System ready / Automatic	Combined Fault	Shortage of Materials	Warning	Processing active	Dispensing active	Dispensing OK. (500 ms)	Dispensing NOK (500 ms)

## Options upon request

- > Manual workplace with working table and tool cabinet
- > Material supply from 310-ml-cartridges

**RAMPF** Production Systems GmbH & Co. KG

Römerallee 14 | 78658 Zimmern o. R. | Germany

T +49.741.2902-0

E production.systems@rampf-gruppe.de

[www.rampf-gruppe.de](http://www.rampf-gruppe.de)